

## Orai1-L2

**Catalog Number:** 21002

**Gene Symbol:** Orai1

**Description:** Orai1 Rabbit Polyclonal Antibody (Orai1-L2)

**Background:** Store-operated calcium channels (SOCs) play essential functions in various physiological processes. Orai1 (also named CRACM1) is a critical molecular component of SOCs. Orai1 protein is a ~35 kDa plasma membrane protein with 4 transmembrane domains. Human patients with a severe combined immunodeficiency (SCID) syndrome possess point mutations in Orai1 gene.

**Immunogen:** A peptide from the extracellular loop 2 region of human Orai1

**Tested Applications:** ELISA, WB

**Recommended Dilutions:**

ELISA	1:1000-1:5000,
WB	1:1000-1:2000,
IHC	1:100-1:200

**Host:** Rabbit

**Clonality:** Polyclonal

**Isotype:** IgG

**Purity:** Immunogen affinity purified

**Format:** Liquid

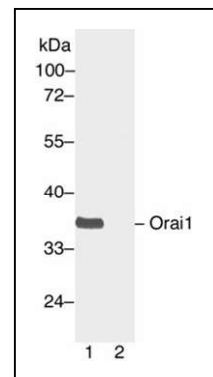
**Preservative:** No

**Constituents:** PBS (without  $Mg^{2+}$  and  $Ca^{2+}$ ), pH 7.4, 150 mM NaCl, 50% glycerol

**Species Reactivity:** Orai1-L2 antibody recognizes Orai1 from human.

**Storage Conditions:** Store at  $-20^{\circ}C$ . Avoid freeze / thaw cycles

## Western blot



## Western blot analysis of Orai1 protein.

Human Orai1 plasmid DNA was transiently transfected into HEK-293 cells. Whole-cell lysate was used for western blot in the absence (A) or presence (B) of antigen peptide

FOR RESEARCH USE ONLY. NOT FOR DIAGNOSTIC APPLICATIONS